



# A New Method for Electric Consumption Forecasting in a Semiconductor Plant

Prayad Boonkham<sup>1</sup>, Somsak Surapatichai<sup>2</sup>

Spansion Thailand Limited 229 Moo 4, Changwattana Road, Pakkred, Nonthaburi 11120

Nonthaburi, Thailand

**Abstract:** This paper presents a new method of electric consumption forecasting by using time series comparison with a new method initiative used in a semiconductor plant. The source of time series data comes from the Metropolitan Electricity Authority (MEA) monthly energy consumption (kWh) during 2010 – 2012, 36 months in total and projection six months ahead compared with a new method. The objective is to select the best forecasting method from least Mean Absolute Present Error (MAPE). The results of this study show that a new method was the best method and least MAPE at 2.48 and also shows the highest significant level compared to the others by using interpolation model in Minitab and excel program. The best forecasting method will be used in forecasting the electricity consumption in the future.

**Keywords;** Time series method, Electric load forecasting, Mean absolute present error, Idle machine, Machine equipments

## I. INTRODUCTION

There are many cases in which a business will make use historic data based on customer information to make predictions or forecast future trends. Forecasting is an important planning tool of particular relevance in the business environment. So then, electrical load forecasting is a main to planning due to it have many parameters relevant such as ft, exchange rate, electricity tariff rate, and volume driven. The researcher has an opportunity to work in a semiconductor plant. Found that, it is a difficult in electric load forecasting because it is a dynamic machine running as demand or volume driven. However, electricity planning system must be accurate for the optimal operation process to least unit cost as well.

Electrical load forecasting is an antique issue in the electricity planning in a semiconductor plant because; it is a big cost to consider for maximizes profit or least unit cost. From the earliest times, it has always been a way to enable the physical balance between the supply and the demand, allowing a reliable system operation. Its role is fundamental to support the analysis of the capacity expansion of existing processes. In a short term perspective, it is also valuable to provide an optimized machine running, helping to manage at least unit cost process. It is therefore essential, according to an operational and planning perspective, to make sure that electricity is available for any period of time align with budget. Electrical load forecasting classified into three categories; short term, medium term and long term load forecasting [1]. Over the past several decades, Researchers have studied a problem to improving load forecast accuracy,

and a wide variety of models have been presented. For instance, D. Srinivasan, C.S. Chang, A.C.

Liew [2] presented linear regression models for electricity consumption forecasting, Bianco V, Manca O, Nardini S. [3] applied gray prediction model for energy consumption, Zhou P, Ang BW, Poh KL. [4] presented an improved singular spectral analysis method for short-term load forecasting in Iran electricity market, Kumar and Jain [5] applied three time series models, namely, Grey-Markov model, Grey-Model with rolling mechanism, and singular spectrum analysis to forecast the consumption of conventional energy in India [6].

Forecasting models merely identify patterns in the data being analyzed and using these patterns, forecast what the variable will do in the future. They are relatively simple to build and use. It does not depend on some underlying theory, they were based on mathematical relationships designed to capture patterns in the data and this paper using electricity in the past totally 36 months to forecasting and facilitated using Minitab program. In section II literature reviews each time series forecasting method is presented and discussed. The methodology is performing in section III. In section IV presented and evaluated the results each time series forecasting method. The conclusions follow in section V.

## II. LITERATURE REVIEW

The electric load forecasting method has many methods and interested in study, however, the constraint of time which is researcher decision selected time series method to apply to semiconductor plant who has the 6 methods detail as following;



**A. Trend analysis method [7]**

This method makes use of statistical technique known as the time series. The time series is an ordered sequence of events over a period of time relating to a certain variety. It shows a series of values of a dependent variable as it changes from one point of time to another by using time series it is possible to project the trend of scales in the future. These are one method used for trend projection was the least square method. It used data in the path to future projections by using fit linear equation. Equation (1) is used to compute the average and to forecast the next period.

$$Y_{t+1} = \frac{\sum_{t=1}^n Y_t}{n} = \bar{Y} \tag{1}$$

Where Y= Forecasting data, t = Time,  $Y_t$  = Value of times, n= total data  
 The first n data points are used as the initialization part and the rest as a test part.

**B. Decomposition method [8]**

Decomposition method is a generic term for solutions of various problems and design of algorithms in which the basic idea is to decompose the problem into sub problems. It can be an effective procedure for the analytical solution of a wide class of dynamical systems without linearization or weak nonlinearity assumptions, closure approximations, perturbation theory, or restrictive assumptions on stochasticity and used data in the path to four portions and each portion is trending, season, cycle, uncertain variation. The equation as (2)

$$Y_t = T_t S_t C_t I_t ; t = 1, 2, \dots \tag{2}$$

**C. Moving average [9]**

A moving average is commonly used with time series data to smooth out short-term fluctuations and highlight longer-term trends or cycles. The threshold between short-term and long-term depends on the application, and the parameters of the moving average will be set accordingly. It used data in the path to future projections by using averages from starting point to periods to desire, who is this paper used three months average for analysis. The equation (3) is used to compute the moving average and to forecast the next period.

$$\text{Moving average} = \frac{\sum \text{demand in previous } n \text{ periods}}{n}$$

$$Y_t = \frac{\sum_{i=1}^N y(t-i)}{N} \tag{3}$$

Where n is the number of periods in the moving average.

**D. Single Exponential smoothing method [10]**

Exponential smoothing is a technique that can be applied to time series data, either to produce smoothed data for presentation, or to make forecasts. The time series data themselves are a sequence of observations. The observed phenomenon may be an essentially random process, or it may be an orderly, but noisy, process. Whereas in the simple moving average the past observations are weighted equally, exponential smoothing assigns exponentially decreasing weights over time. It is a forecasting method that is easy to use and is handled efficiently by computer program. The formula can be shown as equation (4)

$$Y_t = Y_{t-1} + \alpha(A_{t-1} - Y_{t-1}) \tag{4}$$

Where  $Y_t$  is new forecast,  $Y_{t-1}$  is previous forecast,  $\alpha$  is smoothing constant ( $0 \leq \alpha \leq 1$ ),  $A_{t-1}$  is previous period actual demand.

**E. Double exponential method [11]**

Like the regression forecast, the double exponential smoothing forecast is based on the assumption of a model consisting of a constant plus a linear trend. It is used for forecasting technique to smooth the trend and slope directly by using different smoothing constants for each and gives more flexibility in selecting the rates at which the trend and slope are tracked. The formula can be shown as equation (5)

$$Y_{t+k} = X_t + kT_t \tag{5}$$

$$X_t = \alpha Y_t + (1 - \alpha)(X_{t-1} + T_{t-1}), T_t = \beta(X_t - X_{t-1}) + (1 - \beta)T_{t-1}$$

Where  $T_t$  is estimate of trend,  $\alpha, \beta$  are smoothing parameters, in range 0 to 1, for the constant and the trend.

**F. Winter's method [12]**

This method can be extended to deal with time series which contain both trend and seasonal variations. The Holt-Winters method has two versions, additive and multiplicative, the use of which depends on the characteristics of the particular time series. The latter will be considered first. It is similar to Holt's method with an additional element included to account for seasonality. The formula can be shown as equation (6)

$$Y_{t+k} = (X_t + kT_t)S_{t-L+k} \tag{6}$$

$$S_t = \gamma \left[ \frac{Y_t}{X_t} \right] + (1-\gamma)S_{t-L+k}$$

$\gamma$  is smoothing parameters, in the range 0 to 1, L is the length of seasonality

**G. A New Method**

This method can be preparing the data before calculation as follows;



1. Machine on hand; Provided by industrial engineer (IE)
2. Machine requirements; Provided by industrial engineer
3. Idle machine is no. 1 – no. 2
4. kW machine running
5. kW machine idle
6. Exchange rate; Provided by finance
7. Utility rate; Electricity spending the last month in Thai bath divided by kWh
8. Calculating
9. Adjust by cost saving forecast
10. Validation by checking with historical data
11. Submitted to SAP system for use to electricity spending control in the future

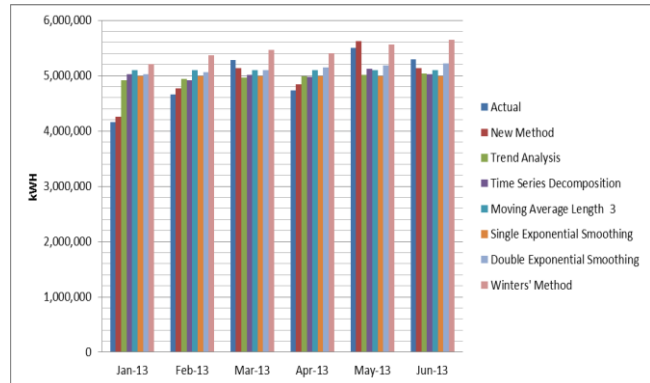


Fig.2 Comparison Jan. – Jun. 2013 kWh actual with each method.

$$Y = ((4 * 2 * t) + (5 * 3 * t)) * 7 / 6 \quad (7)$$

$$Y = (7) - 9 = 10 \quad (8)$$

Y is electricity spending forecast, t = time (hour)

### III. METHODOLOGY

The population of this research is historical power consumption data available in the period from year 2010 to 2010 total sixty-six months as shown in fig. 1 and Comparison Jan – Jun 2013 kWh actual with each method in fig. 2. The data collected from a semiconductor plant in Thailand by using primary data is electric load consumption and secondary is literature reviews. Modeling in Minitab [13] program application to analyze by using time series method after that testing forecasting methodology by trend analysis method, decomposition method, moving averages method, single exponential method, double exponential method, winter's method, a new method initiative by researchers. The results from Minitab program is electric load forecasting six months ahead compared actual with forecast value and considered mean absolute percent error. If also what method has at least MAPE. It will be significant at six and slightly down to one as MAPE values. Selecting the best forecasting method for use to electric load consumption in a semiconductor plant in the future.

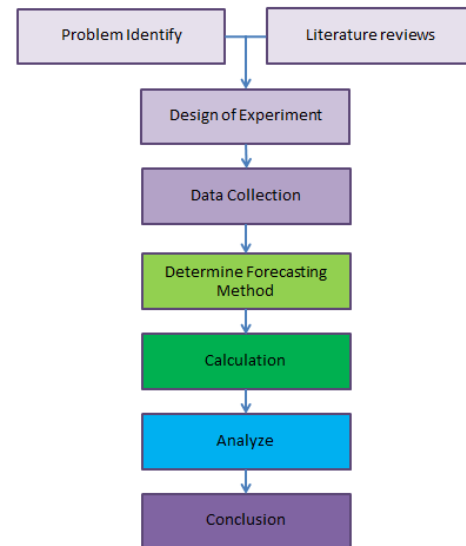


Fig. 3 Research Methodology

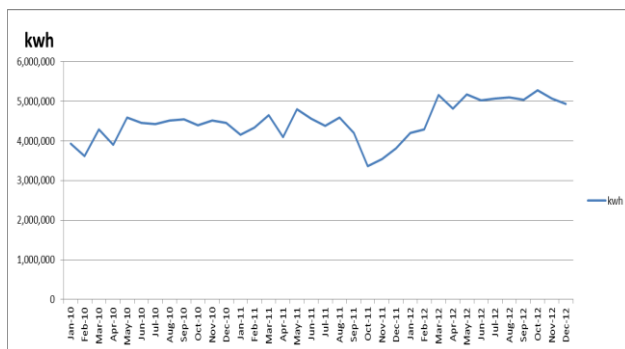


Fig.1 Monthly historical data of the time series from 2010 to 2012

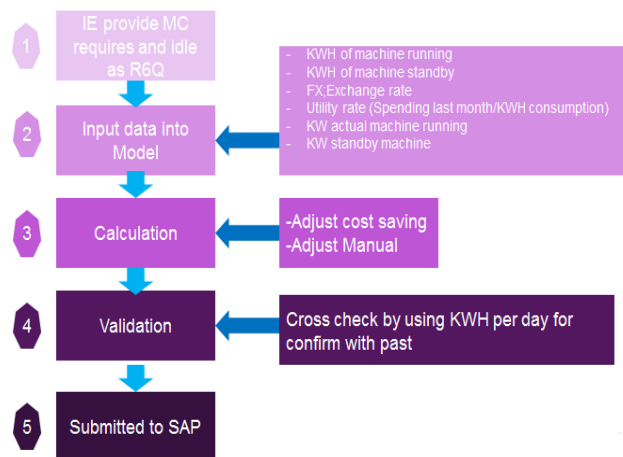


Fig. 4 A New Method Procedure



**IV. RESULTS**

The time series forecasting method by using trend analysis. This technique fits a trend line to a series of electric consumption totally sixty months and then projects the line into the future. The results show in fig. 5

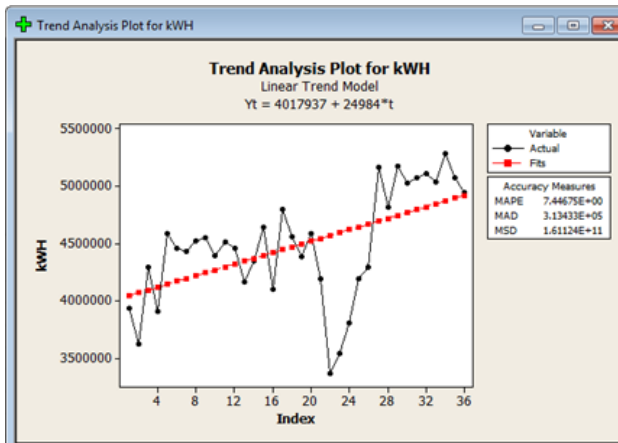


Fig.5 Forecasting by using trend analysis

Decomposition method is forecasting time series in the midterm by decomposition time series data on electric consumption totally sixty months and split to four parts are trending, seasonality, cycles, random variations. The results show in fig. 6

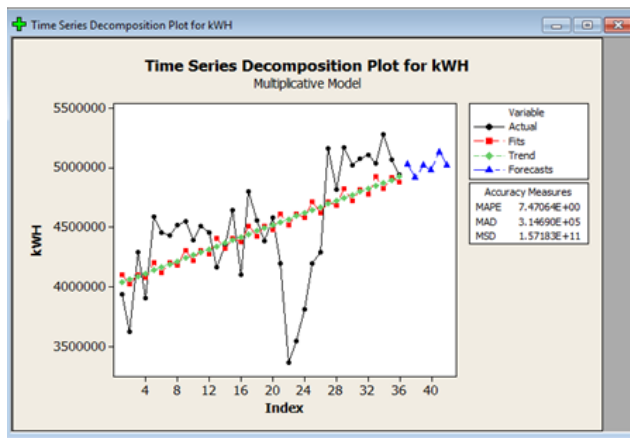


Fig.6 Forecasting by using decomposition method

Moving averages are a method to reduce the side effect impact such as season, business cycle, and random variation from time series forecasting. It is appropriate for short term load forecasting and trend calculating will be stretched a line

and constant as the horizon. This paper used 3 months averages.

The results show in fig. 7

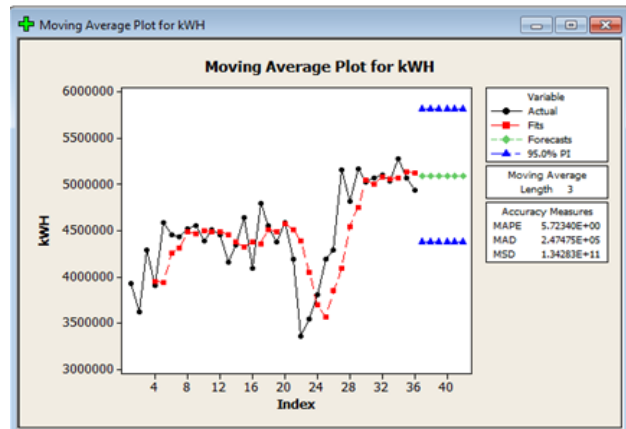


Fig.7 Forecasting by using moving averages 3 month method

Single exponential method is a relatively simple but very useful forecasting technique. Part data is used to generate the forecast with the more recent observations getting a greater weight than older data. The results show in fig. 8

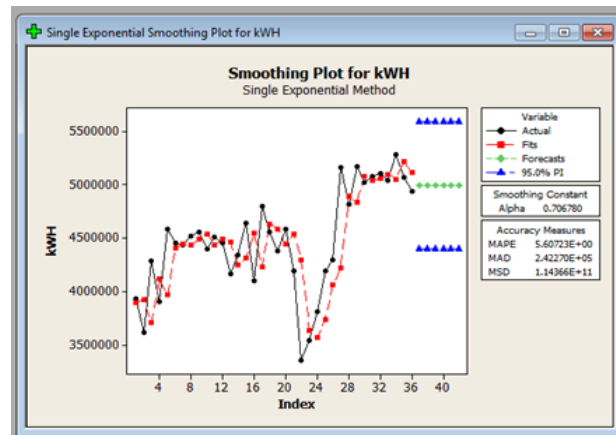
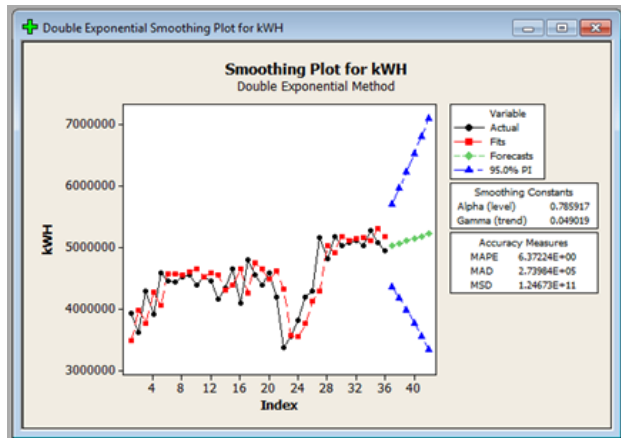


Fig.8 Forecasting by using the single exponential method

The double exponential method is used for forecasting time series data with a linear trend. This technique smoothes the trend and slope directly by using different smoothing constants for each. The results show in fig. 9

Fig. 9 Forecasting by using a double exponential method



Winter's method is similar to double exponential method with an additional element included to account for seasonality. The results show in fig. 10

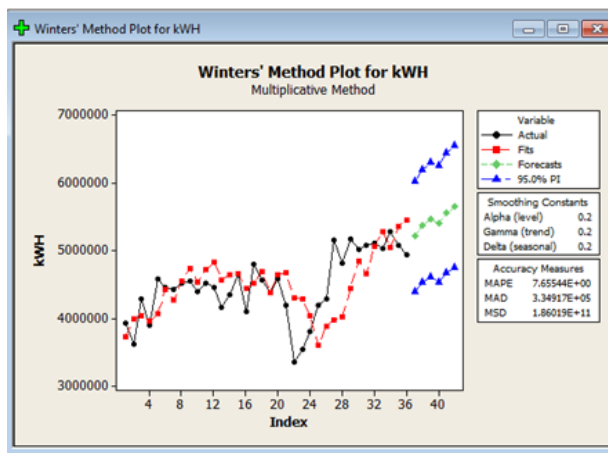


Fig.10 Forecasting by using Winter's method

There are other measures of the accuracy of historical errors in forecasting. In this paper used the performance of the model will be evaluated according to mean absolute percentage error (MAPE), calculated according to;

$$MAPE = \frac{1}{N} \sum_{i=1}^N \left( \frac{|Y_i - \hat{Y}_i|}{Y_i} \right) \times 100\% \quad (9)$$

Where N is the number of existing samples,  $Y_i$  is the real historical value and  $\hat{Y}_i$  is the estimated value.

As a result, comparing time series forecasting method and a new method for finding out the optimal model in a semiconductor plant by using monthly historical data of the time series from 2010 to 2012 with kWh actual six month ahead in 2013 and used MAPE found that as following;

Forecasting Methods	MAPE	Scores
A new method	2.48	7
Single Exponential Smoothing	5.60	6
Moving Average Length 3	5.72	5
Double Exponential Smoothing	6.37	4
Trend Analysis	7.44	3
Time Series Decomposition	7.47	2
Winters' Method	7.65	1

Table. 1 Comparison of forecasting methods

## V. CONCLUSION AND RECOMMENDATION

This paper presented a study and the comparison of electric forecasting methods actual power consumption six months ahead by using monthly historical data of the time series from 2010 to 2012 with a new method. As a result, MAPE value was about the same but a new method was the best electric load forecast for semiconductor plant. It can reduce avoidance cost of electricity spending and a tool for management team decision making in order to minimize the unit cost or maximize the profit from operational management. The new method model in this research, can be applied to others plant.

## REFERENCE

- [1] C.Narumol, J.Somchart, "The forecasting using an average methods and exponential smoothing methods", Ladklabang Engineering Journal, Vol.19, No.1, March 2002.
- [2] D. Srinivasan, C.S. Chang, A.C. Liew, Survey of hybrid fuzzy neural approaches to electrical load forecasting, in: Proceedings on IEEE International Conference on Systems, Man and Cybernetics, Part 5 Vancouver, BC, 1995, pp.4004-4008.
- [3] Bianco V, Manca O, Nardini S. Electricity consumption forecasting in Italy using linear regression models. Energy 2009;34(9):1413e21.
- [4] Zhou P, Ang BW, Poh KL. A trigonometric grey prediction approach to forecasting electricity demand. Energy 2006;31(14):2839e47.
- [5] Kumar U, Jain VK. Time series models to forecast energy consumption in India. Energy 2010;35(4):1709e16.
- [6] Afshar K, Bigdeli N. Data analysis and short term load forecasting in Iran electricity market using singular spectral analysis (SSA). Energy 2011;36(5): 2620e7.
- [7] Bianco V, Manca O, Nardini S. Electricity consumption forecasting in Italy using linear regression models. Energy 2009; 34(9):1413e21.
- [8] Benaouda D, Murtaghb F, Starckc JL, et al. Wavelet- based nonlinear Multi scale decomposition model for electricity load forecasting. Euro computing 2006;70 (1):139-54.
- [9] Pappas SS, Ekonomou L, Karamousantans DC, et al. Electricity demand loads modeling using autoregressive moving average (ARMA) models. Energy 2008; 33(9):1353-60.
- [10] Christiaanse W. Short-term load forecasting using general exponential smoothing. Power Apparatus Syst IEEE Trans 1971;PAS-90(2):900-11.
- [11] T. Cipra, "Robust exponential smoothing," Int. J. Forecast., vol. 11, no. 1, pp. 57-69, 1992.
- [12] Gelper, S., Fried, R., Croux, C., 2010. Robust forecasting with exponential and holt winters smoothing. J. Forecast. 29, 285-300.
- [13] (2013 ) The Minitab website [Online]. Available: <http://www.minitab.com/>.



### **BIOGRAPHY**



**Mr. Prayad Boonkham** obtained his Bachelor Degree in Electrical Engineering from North Eastern University, Khonkhan, Thailand and Master degree in Electrical Engineering from the Kasetsart University, Bangkok, Thailand. He is currently in Principle engineer with Spansion (Thailand) Co., LTD. He has been interested in the area of electrical power system operations ,planning, power system economics, load forecasting and energy conservation.