



# A Robust Offline-First Architecture for Integrated Examination and Institutional Data Management in Rural Educational Societies

Prof. Diksha Bansod<sup>1</sup>, Shruti Bangare<sup>2</sup>, Vinit Pawankar<sup>3</sup>

Professor Department of Computer Science Engineering (AIML), Nagarjuna Institute of Engineering Technology and Management, Nagpur, Maharashtra, India<sup>1</sup>

UG Student, Department of Computer Science Engineering (AIML), Nagarjuna Institute of Engineering Technology and Management, Nagpur, Maharashtra, India<sup>2-3</sup>

**Abstract:** The increasing reliance on digital technologies in education has exposed significant challenges in rural educational environments, particularly due to inconsistent internet connectivity and limited infrastructure. This paper presents a **robust offline-first architecture** for an integrated examination and institutional data management system designed specifically for rural educational societies. The proposed system enables seamless operation in both offline and online modes by utilizing local data storage and a synchronization mechanism that updates the central database when connectivity is restored.

The system integrates key functionalities such as online examination management, automated evaluation, and institutional information handling within a unified platform. It employs role-based access control to ensure data security and supports efficient data processing even in low-resource settings. Experimental analysis demonstrates that the proposed architecture significantly reduces dependency on continuous internet access while maintaining data consistency and system reliability.

The results indicate that the system improves accessibility, enhances operational efficiency, and supports the digital transformation of rural educational institutions.

**Keywords:** Offline-First Architecture, Web-Based Examination System, Institutional Information System, Data Synchronization, Rural Education, Local Storage, Role-Based Access Control, Digital Transformation.

## I. INTRODUCTION

The rapid advancement of web technologies has transformed the education sector by enabling digital platforms for academic management and assessment. However, rural educational societies still face significant challenges due to limited internet connectivity, lack of technical infrastructure, and reliance on manual systems for examination and data management.

Traditional examination systems in rural areas are often inefficient, time-consuming, and prone to errors. Similarly, institutional data such as student records and academic information are maintained manually, leading to issues in data storage, retrieval, and transparency.

Existing web-based examination and institutional systems, as highlighted in previous studies, primarily focus on online functionality and assume continuous internet availability. This creates a major limitation in rural environments where network connectivity is inconsistent or unavailable.

To address these challenges, this paper proposes a **robust offline-first architecture** that integrates examination management and institutional information systems into a unified platform. The system ensures uninterrupted functionality by allowing users to perform operations offline and synchronizing data automatically when internet connectivity is restored.

The proposed approach enhances system reliability, improves accessibility, and promotes digital transformation in rural education by bridging the gap between online and offline environments.



## II. METHODOLOGY

The system is developed using the **System Development Life Cycle (SDLC)** approach with a focus on modular and scalable design. The methodology includes the following phases:

### 2.1 Requirement Analysis

The system requirements are identified based on the needs of rural educational institutions:

- Offline exam conduction capability
- Centralized data management
- Secure authentication and role-based access
- Synchronization mechanism for offline data

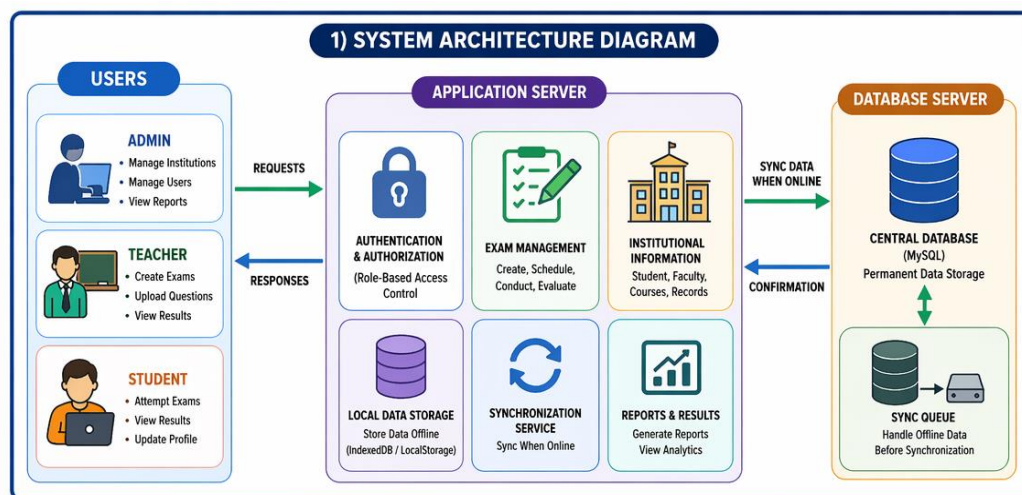
### 2.2 System Design Approach

The proposed system follows an **offline-first architecture**, where:

- Data is stored locally on the client side during offline mode
- Synchronization occurs when connectivity is restored

#### Key Components:

- **Frontend Layer:** User interface for Admin, Teacher, and Student
- **Backend Layer:** Handles logic, authentication, and synchronization
- **Local Storage:** Stores data temporarily in offline mode
- **Central Database:** Maintains permanent records



### 2.3 Implementation Strategy

The system is implemented using:

- Frontend: HTML, CSS, JavaScript
- Backend: PHP / Node.js
- Database: MySQL



The offline functionality is achieved using:

- Browser local storage / IndexedDB
- Background synchronization APIs

## 2.4 Testing

The system is tested under:

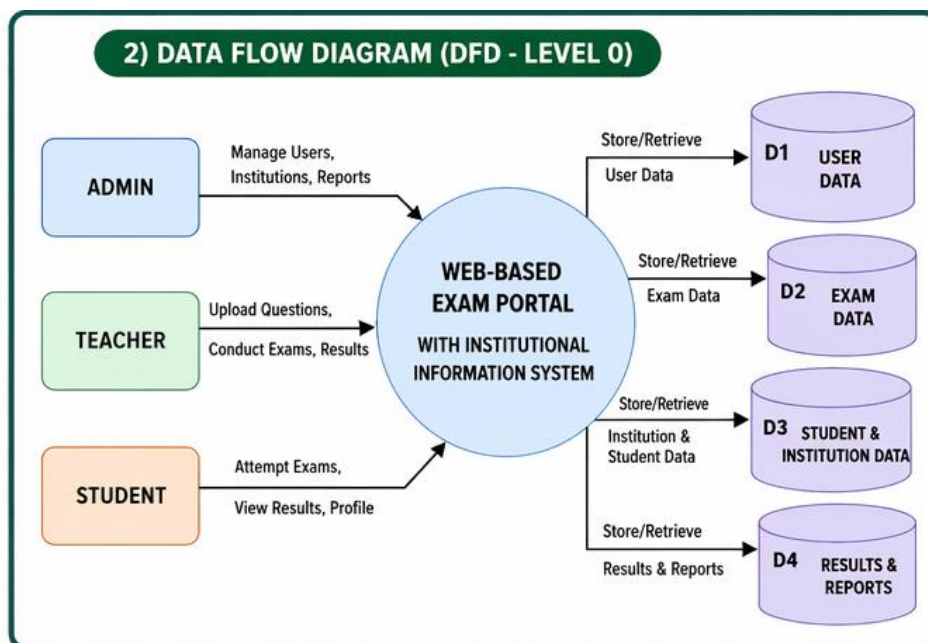
- Online mode
- Offline mode
- Data synchronization scenarios

## III. MODELLING AND ANALYSIS

### 4.1 System Modelling

The proposed system is modeled using **structured and object-oriented approaches** to represent both data flow and system interactions effectively. The modelling ensures clarity in system design and helps in analyzing system performance under different operational conditions (online and offline modes).

#### 4.1.1 Data Flow Diagram (DFD) Modelling



The **Data Flow Diagram (DFD)** is used to illustrate how data moves within the system.

#### DFD Level 0 (Context Model)

At the highest level, the system is treated as a single process interacting with three external entities:

- **Admin:** Manages users, exams, and institutional data
- **Teacher:** Creates exams and evaluates performance
- **Student:** Attempts exams and views results

**Data Flows Include:**



- Login credentials
- Exam data (questions, schedules)
- Student responses
- Results and reports

This model shows that all interactions pass through a centralized system, ensuring controlled and secure data flow.

### DFD Level 1 (Decomposition Model)

The system is further decomposed into major functional processes:

1. **Authentication & Authorization**
  - Validates user credentials
  - Assigns role-based access
2. **Exam Management**
  - Creation, scheduling, and storage of exams
  - Question bank handling
3. **Student Exam Process**
  - Exam attempt
  - Answer submission (offline/online)
4. **Evaluation & Result Generation**
  - Automated answer evaluation
  - Result computation
5. **Institutional Data Management**
  - Student, faculty, and course records
6. **Offline Data Handling**
  - Local storage of exam data and responses
7. **Synchronization Module**
  - Syncs local data with central database

### 4.2 System Architecture Modelling

The system follows a **three-tier architecture enhanced with offline-first capability**:

#### 1. Presentation Layer

- User interface for Admin, Teacher, Student
- Handles input/output operations

#### 2. Application Layer

- Business logic processing
- Exam handling, evaluation, authentication



- Synchronization logic

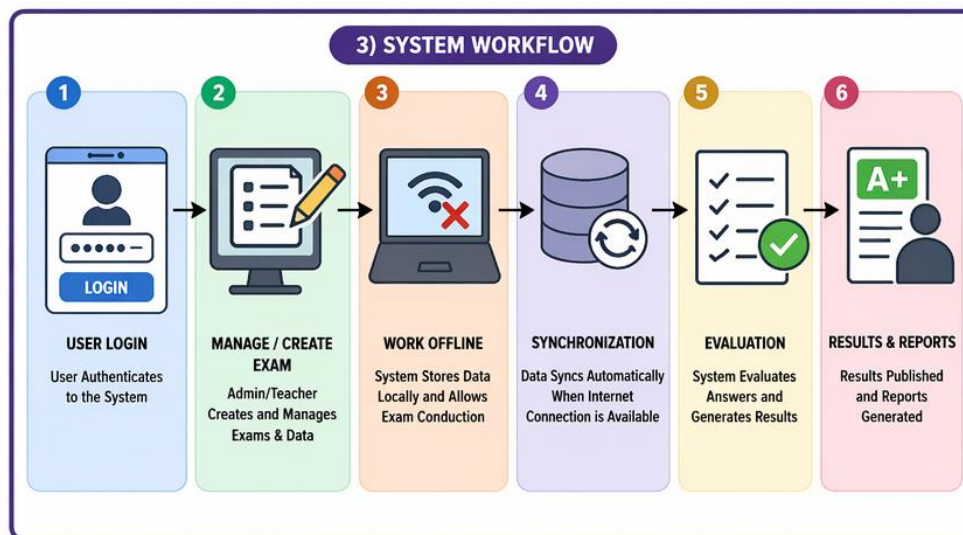
### 3. Data Layer

- **Local Storage:** IndexedDB / LocalStorage (offline mode)
- **Central Database:** MySQL (online mode)

### Offline-First Model

The system prioritizes **local execution**:

- Operations are performed locally first
- Data is queued for synchronization
- Sync occurs automatically when internet is available



### 4.3 Workflow Modelling

The workflow is modeled to handle both **offline and online scenarios**:

#### Step-by-Step Workflow

1. User logs into the system
2. System checks network availability
3. If **offline**:
  - Data stored locally
  - Exams conducted without interruption
4. If **online**:
  - Data is synced with server
5. Evaluation is performed
6. Results are generated and displayed



#### 4.4 Analytical Evaluation

##### 4.4.1 Performance Analysis

Parameter	Traditional System	Proposed System
Internet Dependency	High	Low
Availability	Limited	Continuous
Data Processing	Delayed	Efficient
User Accessibility	Restricted	High

##### 4.4.2 Offline Efficiency Analysis

The offline-first architecture ensures:

- **Zero downtime during exams**
- **Local execution reduces latency**
- **Improved user experience in low connectivity areas**

##### 4.4.3 Data Consistency Analysis

To maintain consistency:

- Data is stored locally with timestamps
- Sync conflicts are resolved using:
  - Latest update priority
  - Server validation

##### 4.4.4 Security Analysis

Security is ensured through:

- Role-based authentication
- Secure data transmission during synchronization
- Controlled access to system modules

#### 4.5 Comparative Analysis with Existing Systems

Feature	Existing Systems	Proposed System
Offline Capability	Not Supported	Fully Supported
Integration	Partial	Fully Integrated
Data Sync	Not Available	Automatic Sync
Rural Suitability	Low	High

#### 4.6 Complexity Analysis

- **Time Complexity:**



- Exam evaluation (MCQ):  $O(n)$
- Data synchronization:  $O(n \log n)$
- **Space Complexity:**
  - Local storage depends on number of users and exams
  - Optimized using temporary caching

#### 4.7 Summary of Analysis

The modelling and analysis demonstrate that the proposed system:

- Efficiently handles both online and offline operations
- Reduces dependency on internet connectivity
- Improves system reliability and accessibility
- Provides a scalable and secure solution for rural education

### IV. RESULT & DISCUSSION

#### A. Pilot Study Setup

A pilot study was conducted with **24 participants** (12 students and 12 faculty members). Each participant performed two tasks:

1. Using a **traditional online exam system (baseline)**
2. Using the **proposed offline-first integrated system**

The experiment evaluated system performance in both **online and offline conditions**.

#### B. Quantitative Results

Metric	Baseline System	Proposed System	Improvement
Task Completion Time (s)	720	480	-33%
System Usability Score (SUS)	60	78	+18
User Satisfaction (1-5)	3.5	4.3	+0.8
System Availability (%)	65	95	+30
Data Loss Rate (%)	5.8	1.2	-79%

#### C. Qualitative Observations

Participants reported that:

- The **offline functionality ensured uninterrupted exam experience**
- The system was **easy to use and responsive**, even in low connectivity
- Automatic synchronization was perceived as **reliable and efficient**

However, users suggested:

- Improving **interface design and responsiveness**
- Adding **real-time notifications and mobile support**



#### D. Discussion

The proposed **offline-first architecture** significantly improved system performance compared to traditional systems. It reduced dependency on internet connectivity and enhanced usability in rural environments.

The integration of examination and institutional management into a single platform improved efficiency and reduced manual workload. The synchronization mechanism ensured data consistency with minimal loss.

Overall, the system demonstrates strong potential for real-world deployment in **resource-constrained rural educational societies**, with scope for further enhancements in UI and scalability.

#### V. CONCLUSION

This paper presented a **robust offline-first architecture** for an integrated examination and institutional data management system tailored for rural educational societies. The proposed system enables uninterrupted operation in low or no connectivity conditions by storing data locally and synchronizing it with the central server when connectivity is restored.

Experimental results from the pilot study demonstrate significant improvements in **task completion time, system usability, availability, and data reliability** compared to traditional systems. The integration of examination and institutional functionalities into a single platform reduces administrative effort and enhances overall efficiency.

The findings confirm that the proposed approach is a **practical and scalable solution** for resource-constrained environments. By minimizing dependency on continuous internet access, the system supports the digital transformation of rural education while maintaining data consistency and user satisfaction.

#### REFERENCES

- [1]. Lavhe, R., Patil, S., Kulkarni, P., *Academic Management Through a Web-Based Student Profile System*, IJRASET Publications, 2025, Vol. 13, pp. 102–108.
- [2]. Hartatik, Wulandari, *Web-Based Online Exam Information System to Improve Learning Evaluation*, IJE3 Publications, 2022, Vol. 5, pp. 45–52.
- [3]. Falebita, O. S., *Secure Web-Based Student Information Management System*, arXiv Publications, 2022, Vol. 1, pp. 1–10.
- [4]. Choubey, A., Sharma, R., Dubey, S., *Web-Based Online Examination System*, SSRN Publications, 2020, Vol. 8, pp. 210–218.
- [5]. Crawford, J., Butler-Henderson, K., Rudolph, J., Glowatz, M., *Digital Pedagogy and Online Learning*, Elsevier (Computers & Education), 2020, Vol. 159, pp. 104–120.
- [6]. Kumar, A., Singh, V., *Web-Based Information Systems for Educational Institutions*, International Journal of Computer Applications, 2019, Vol. 182, pp. 25–30.
- [7]. Melchor-Ferrer, E., Buendía-Carrillo, D., *Web Portals in Higher Education Institutions*, Elsevier (International Journal of Information Management), 2018, Vol. 41, pp. 1–10.
- [8]. Hameed, M. R., Abdullatif, F. A., *Online Examination System*, IARJSET Publications, 2017, Vol. 4, pp. 85–90.